

Universidad de Puerto Rico
Recinto Universitario de Mayagüez
Departamento de Ingeniería Eléctrica y Computadoras

INEL 4075 Asignacion #7:

Semana de lunes 6 de mayo de 2013.

Nombre: _____

Sección: _____

1.

Calculate the rms value of the half-wave rectified sine wave shown in Figure P5.12.

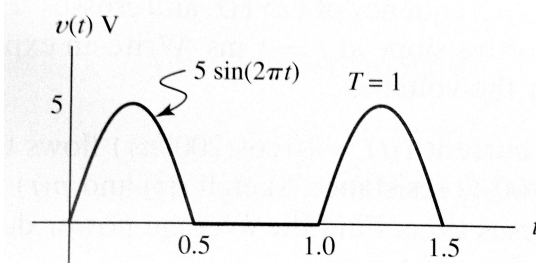


Figure P5.12

2.

A balanced wye-connected three-phase source has line-to-neutral voltages of 240 V rms. Find the rms line-to-line voltage. This source is applied to a delta-connected load, each arm of which consists of a $10\text{-}\Omega$ resistance in parallel with a $+j5\text{-}\Omega$ reactance. Determine the rms line current magnitude, the power factor, and the total power delivered.

3.

P14.11. Determine the closed-loop voltage gain of the circuit shown in Figure P14.11, assuming an ideal op amp.

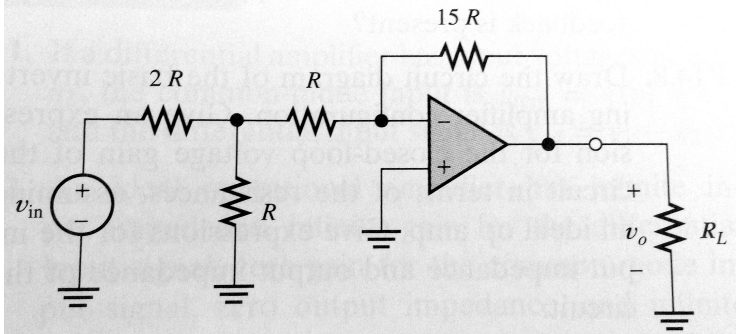


Figure P14.11